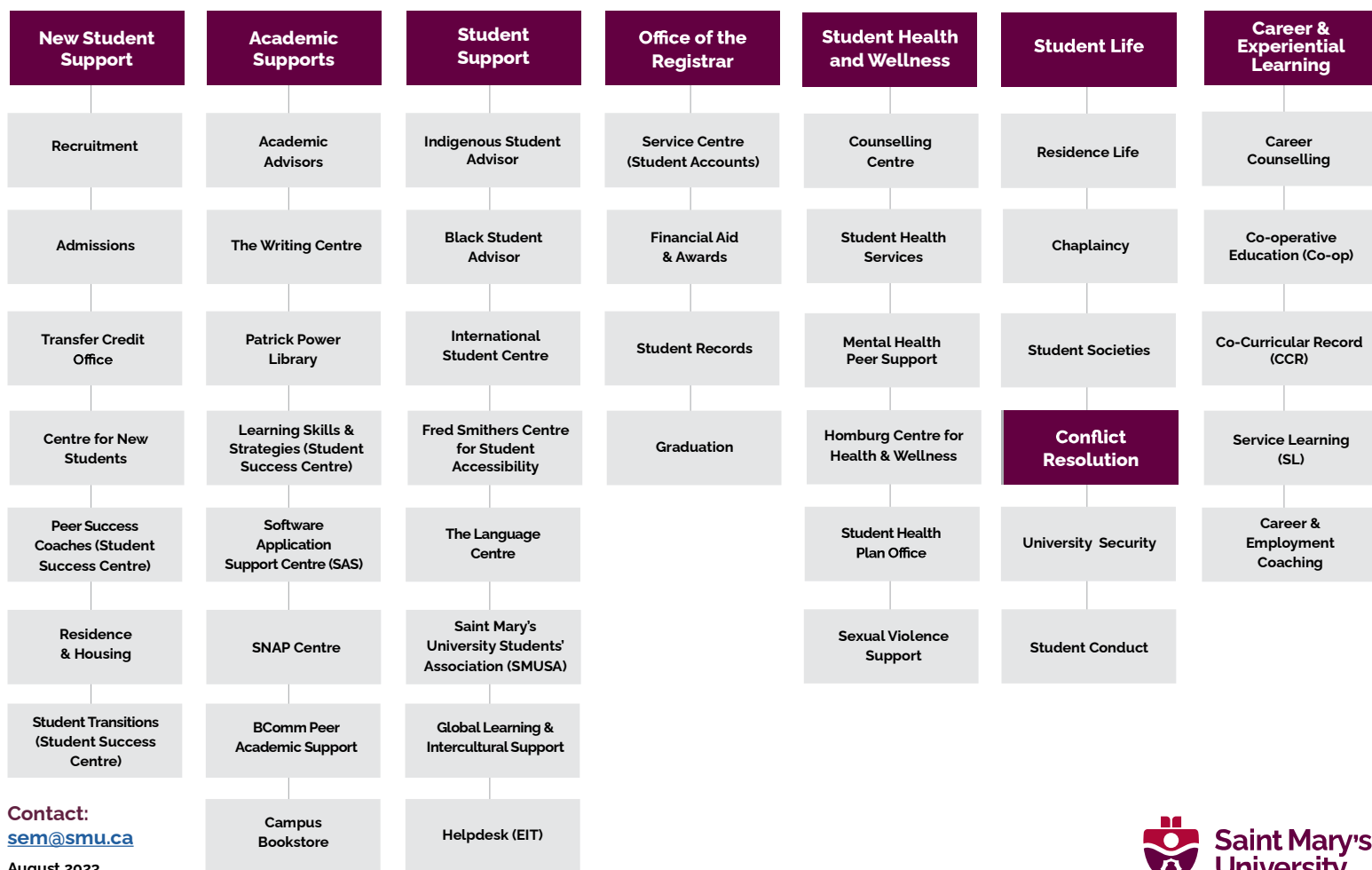


# Student Help Tree

A resource designed to help students find the Saint Mary's supports and services they need.



Contact:  
[sem@smu.ca](mailto:sem@smu.ca)  
 August 2023



**Academic Advising**

**Support:** Academic planning, program requirements, academic regulations & processes

**Arts:** [BAadvising@smu.ca](mailto:BAadvising@smu.ca);

**Commerce:** [bcomm.advising@smu.ca](mailto:bcomm.advising@smu.ca);

**Science:** [advisor.science@smu.ca](mailto:advisor.science@smu.ca)

**Admissions**

**Support:** Admissions questions and application status, UPREP courses, entrance scholarships  
[recruitment@smu.ca](mailto:recruitment@smu.ca)

**BComm Peer Academic Support (PAS)**

**Support:** Peer academic support for core Commerce courses  
[bcomm.advising@smu.ca](mailto:bcomm.advising@smu.ca)

**Black Student Advisor**

**Support:** Black student engagement and support  
[blackstudentadvisor@smu.ca](mailto:blackstudentadvisor@smu.ca)

**Bookstore**

**Support:** Course materials; school supplies, memorabilia/gifts  
[bookstore@smu.ca](mailto:bookstore@smu.ca)

**Centre for New Students**

**Support:** Course registration, campus tours  
[cns@smu.ca](mailto:cns@smu.ca)

**Chaplaincy**

**Support:** Chapel, social events, spiritual counselling/guidance  
[chaplain@smu.ca](mailto:chaplain@smu.ca)

**Career Counselling**

**Support:** Career planning, decision-making, addressing career anxiety  
[cel@smu.ca](mailto:cel@smu.ca)

**Career & Employment Coaching**

**Support:** Job search support: resumes, cover letters, networking, interviews  
[cel@smu.ca](mailto:cel@smu.ca)

**Co-curricular Record**

**Support:** Volunteer and leadership opportunities  
[ccr@smu.ca](mailto:ccr@smu.ca)

**Co-operative Education**

**Support:** Secure work experience related to academic studies, assistance with co-op job search  
[coop@smu.ca](mailto:coop@smu.ca)

**Counselling Centre**

**Support:** Personal counselling; mental health support and education  
[counselling@smu.ca](mailto:counselling@smu.ca)

**EIT Helpdesk (Enterprise Information Technology)**

**Support:** Accounts & passwords, wifi/SMU network issues  
[helpdesk@smu.ca](mailto:helpdesk@smu.ca)

**Financial Aid & Awards**

**Support:** Scholarships, bursaries, student loans, financial literacy  
[financial.aid@smu.ca](mailto:financial.aid@smu.ca)

**Fred Smithers Centre for Student Accessibility**

**Support:** Accessibility services, test/exam accommodations  
[fredsmithers.centre@smu.ca](mailto:fredsmithers.centre@smu.ca)

**Global Learning & Intercultural Support**

**Support:** Study abroad, international field study course  
[global@smu.ca](mailto:global@smu.ca)

**Graduation**

**Support:** Graduation applications, convocation inquiries  
[graduation@smu.ca](mailto:graduation@smu.ca)

**Homburg Centre for Health & Wellness**

**Support:** Wellness programs, studio/fitness facilities, varsity athletics  
902-420-5429

**Indigenous Student Advisor**

**Support:** Engaging and supporting Indigenous students  
[indigenous.advisor@smu.ca](mailto:indigenous.advisor@smu.ca)

**International Student Centre**

**Support:** Visa & study permit, social activities, student advising  
[international.centre@smu.ca](mailto:international.centre@smu.ca)

**The Language Centre**

**Support:** Help students achieve language goals  
[language@smu.ca](mailto:language@smu.ca)

**Learning Skills and Strategies**

**Support:** Academic support, meeting course expectations, self-regulation strategies  
[student.success@smu.ca](mailto:student.success@smu.ca)

**Mental Health Peer Support**

**Support:** One-on-one support for mental health  
[peersupport@smu.ca](mailto:peersupport@smu.ca)

**Office of the Registrar**

**Support:** Academic standing, academic calendar, records, appeals  
[registrar@smu.ca](mailto:registrar@smu.ca)

**Patrick Power Library**

**Support:** Books/journals, research help, study space, student ID  
[research@smu.ca](mailto:research@smu.ca)

**Peer Success Coaches**

**Support:** Peer support for new students and first year transition  
[peercoaching@smu.ca](mailto:peercoaching@smu.ca)

**Recruitment**

**Support:** Prospective students, campus tours, admission requirements  
[recruitment@smu.ca](mailto:recruitment@smu.ca)

**Residence Life**

**Support:** Residence programing, support for students in residence  
[residence.programming@smu.ca](mailto:residence.programming@smu.ca)

**Residence & Housing**

**Support:** Housing applications, residence fees  
[residence.housing@smu.ca](mailto:residence.housing@smu.ca)

**Service Centre**

**Support:** Confirmation of enrolment, student accounts, transcripts  
[service.centre@smu.ca](mailto:service.centre@smu.ca)

**Service Learning**

**Support:** Course integrated community-based experience  
[service.learning@smu.ca](mailto:service.learning@smu.ca)

**Sexual Violence Support**

**Support:** Resources for people who have experienced sexual violence  
[sexualviolence@smu.ca](mailto:sexualviolence@smu.ca)

**SMUSA (Saint Mary's University Students' Association)**

**Support:** Student advocacy, husky patrol, food room, transit passes  
[info@smusa.ca](mailto:info@smusa.ca)

**SNAP Centre (Science Numeracy & Academic Proficiency)**

**Support:** Peer tutoring for first-year science and engineering courses  
[snap@smu.ca](mailto:snap@smu.ca)

**Software Application Support Centre (SAS)**

**Support:** Online platform assistance (Brightspace, MS Teams, Zoom)  
[sas@smu.ca](mailto:sas@smu.ca)

**Student Conduct**

**Support:** Non-academic misconduct offences, complaints  
[student.conduct@smu.ca](mailto:student.conduct@smu.ca)

**Student Health Services**

**Support:** Medical care, medical appointments, sexual violence support  
[student.health@smu.ca](mailto:student.health@smu.ca)

**Student Health Plan Office**

**Support:** Health and dental plan coverage information  
[healthplan.smusa@smu.ca](mailto:healthplan.smusa@smu.ca)

**Student Success Centre**

**Support:** Peer success coaching, learning skills and strategies, student life and events  
[student.success@smu.ca](mailto:student.success@smu.ca)

**Student Transitions**

**Support:** Welcome events, student life activities, alcohol & drug education  
[welcome@smu.ca](mailto:welcome@smu.ca)

**Student Societies**

**Support:** Society directory, resources, support  
[society.coordinator@smu.ca](mailto:society.coordinator@smu.ca)

**Transfer Credit Office**

**Support:** Transfer credit assessment  
[transfer@smu.ca](mailto:transfer@smu.ca)

**University Security**

**Support:** Campus security, parking  
[security@smu.ca](mailto:security@smu.ca)

**Writing Centre:**

**Support:** Academic communication support, tutoring, writing resources  
[writing@smu.ca](mailto:writing@smu.ca)